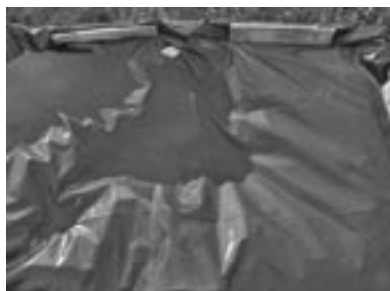


## CONTROL OF POTATOES IN OUTGRADE PILES

Photos of the demonstration boxes exhibited at Potatoes in Practice taken on 30th June 2005

Demonstration carried out by CSC



1. Plastic sheeting.



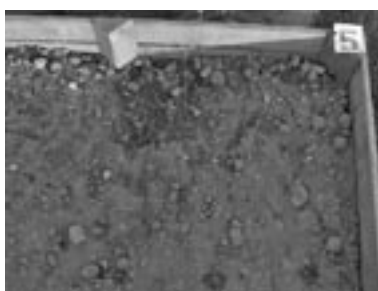
2. **Dichlobenil Granules best practice @ 30 g/m<sup>2</sup> to sprouted tubers, no more than 1-2 compound leaves** - Level box cover tubers with a thin layer of soil, apply Dichlobenil granules cover again with soil.



3. **Dichlobenil granules @ 30 g/m<sup>2</sup> directly to sprouted tubers, no more than 1-2 compound leaves and cover with soil.**



4. **PDQ + Dichlobenil Granules:** Leave to sprout, 2-3 compound leaves, then apply PDQ @ 5.5 l/ha followed by Dichlobenil granules @ 30 g/m<sup>2</sup> directly to potatoes, cover with layer of soil .



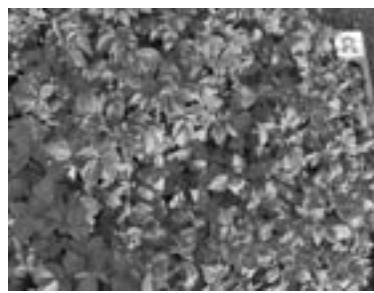
5. **Round up + Dichlobenil granules:** Leave to sprout to 2-3 compound leaves then apply Roundup 5.0 l/ha followed by Dichlobenil @ 30 g/m<sup>2</sup>, cover with soil.



6. **PDQ :** Leave to sprout 2- 3 compound leaves then apply spray of PDQ @ 5.5 l/ha. Repeat PDQ to subsequent re-growth



7. **Roundup:** Leave to sprout to 2-3 compound leaves then apply spray of Roundup @ 5.0 l/ha. Repeat if subsequent re-growth.



8. **Untreated** but sprayed with Mancozeb 1.8 kg/ha every seven days to